

Academic's guide

Kortext 

Using the Kortext Arcturus platform will give you the tools you need to deliver a learning experience to your students that will keep them engaged throughout their journey. Our platform provides your students with the course materials they need and provides you with the tools to oversee their progress.

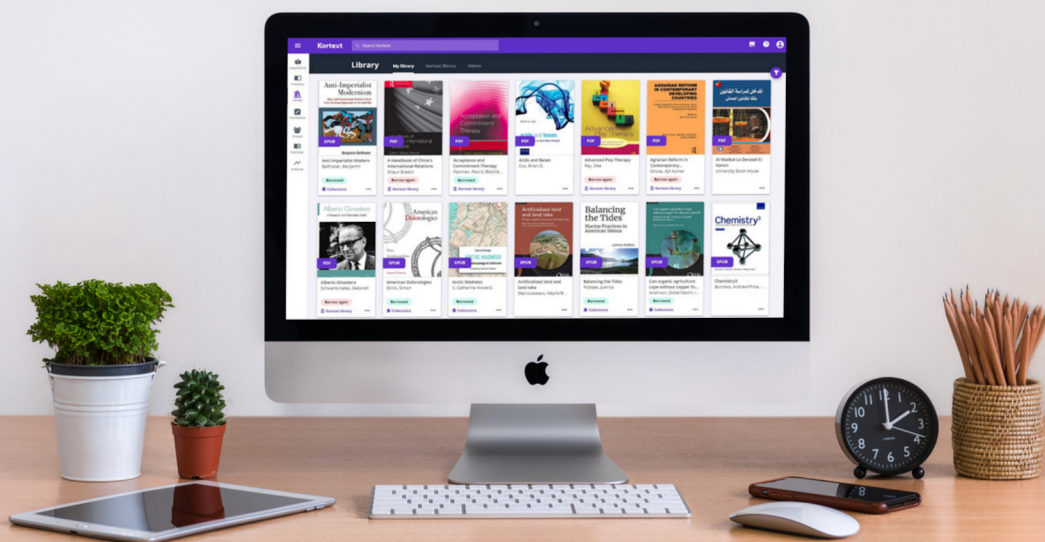
With our platform, you can:

- Access everything you need in one place
- Integrate with your own VLE
- Oversee your students' progress
- Collaborate to drive student engagement
- Provide support for your students

What our academic users are saying:

'I like that I can look at the analytics and I can see that when I ask my students to read chapter one in week one that I can see how many people are doing so and I can reflect over the year. I can see nobody did that extra reading ... nobody went there ... it gives me a better understanding of what students are doing.'

Jamie Halstead - Middlesex University



The bookshelf at a glance

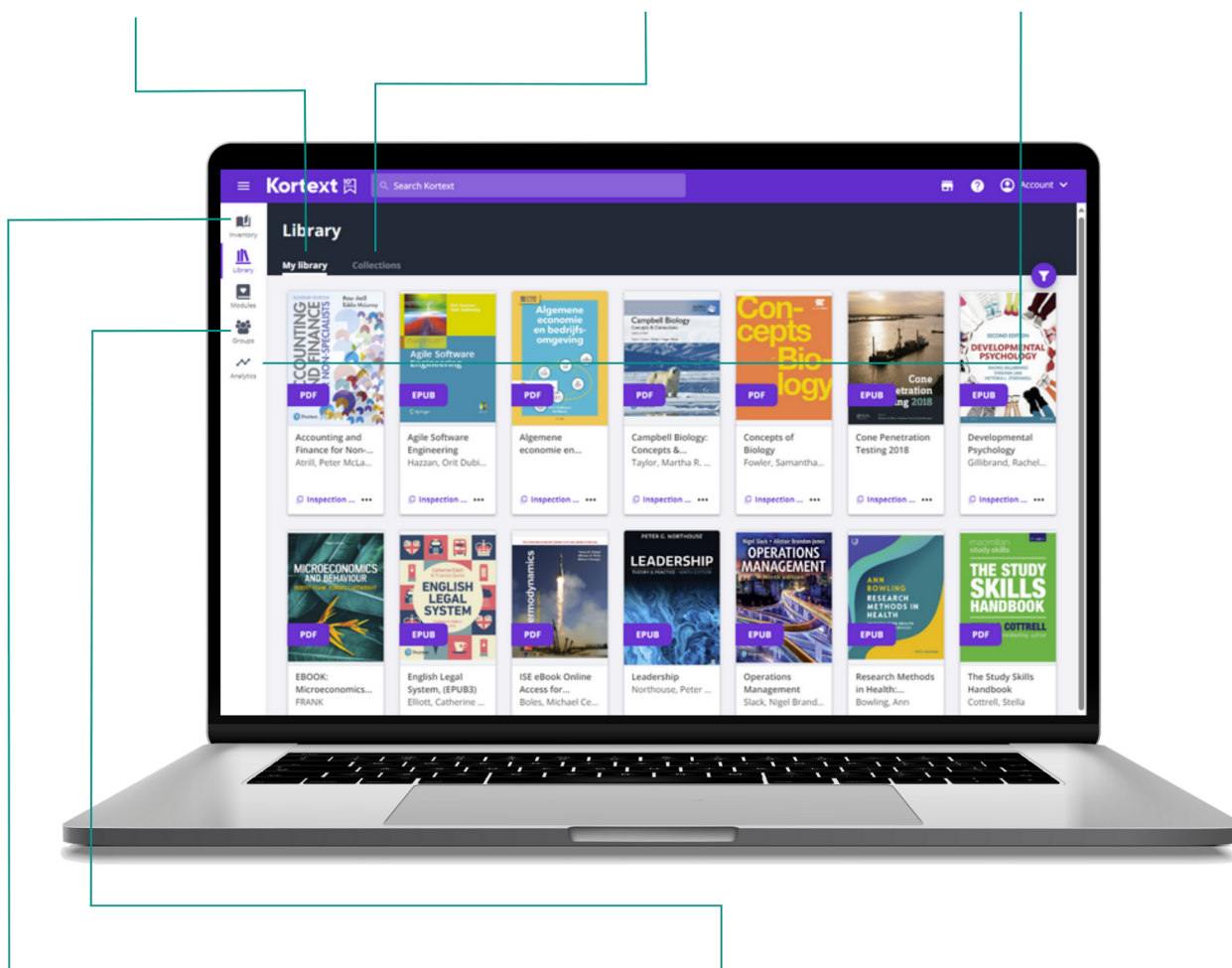
We help our partner institutions take teaching and learning to the next level by leveraging Kortext's personalised digital bookshelf.

Easy to navigate and fully searchable for seamless content discovery, the bookshelf is what your students will see when they log in. As an academic, it's inevitable that you'll receive student queries, or you may have queries about the platform's functionality. This overview of the bookshelf should provide surface level answers.

My library shows users the books that have been provisioned to them.

Collections contains institution-enabled access to our open educational resources library.

Analytics is where you gain access to detailed, insightful data about platform usage.



Inventory is where you can access inspection copies and request module copies for your students.

Groups enables you and your students to set up peer-to-peer and academic-to-peer study groups for easy collaboration and note sharing.

The bookshelf explained

Search

Our new Google-like intelligent search makes it even easier to find relevant content. This includes:

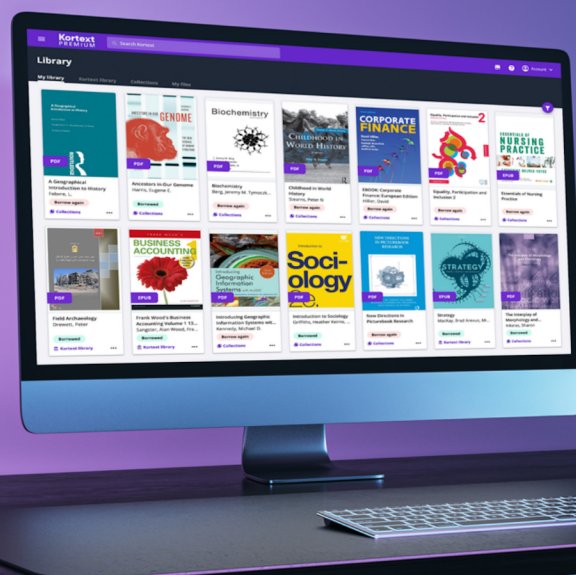
- Predictive search - when a user begins to type, the search will predict the word(s).
- Predictive results - a list of recommended results appear under the search. Results can then be filtered by best match, alphabetically, by publication year and by publisher.

Inventory

Kortext's Inventory is exclusively available to academic users. This enables academic users to search Kortext's entire inventory to find texts suitable for their modules, automatically access them as inspection copies and then request module-level provision with just a few taps.

Groups

Kortext's Groups functionality enables academics and students to set up online study groups and instantly share notes with classmates for easy anytime, anywhere collaboration.



Analytics

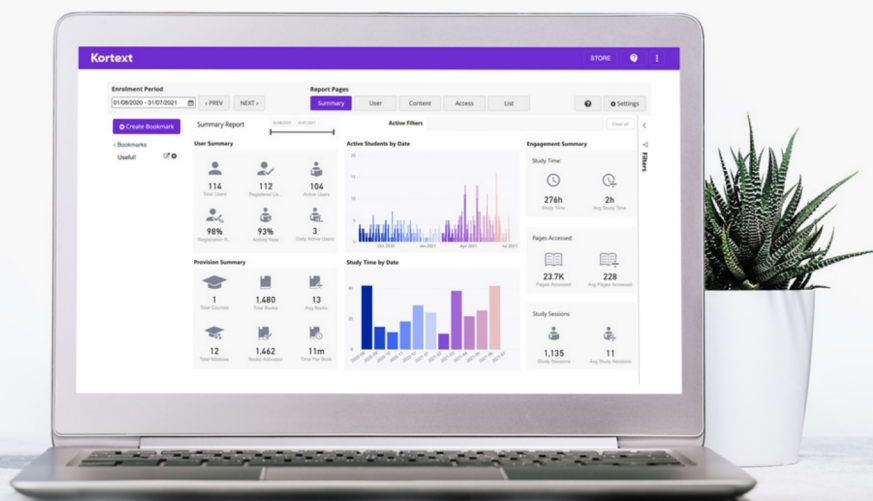
Insight, Kortext's data analytics tool, provides valuable data and reports on student engagement and content usage. The dashboard includes summaries and granular data right down to individual book or student level. In fact, Kortext delivers the most comprehensive data in the market today.

Our analytics dashboards allow academics, librarians and course leaders to make informed decisions about course content and tailor support to students who need it most, to improve engagement and facilitate learning.

'One of the most important aspects for us in terms of provision is the monitoring of usage data on the Kortext analytics dashboard.

Usage of all the different functionalities on the platform has increased in the past year, except printed copies which have decreased, thus highlighting a positive shift towards digital learning.'

Olivia Walsby - University of Manchester



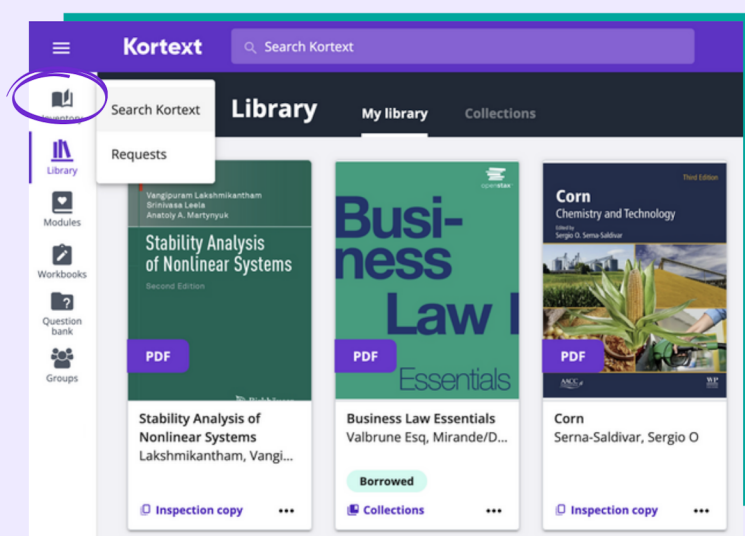
Collections

We have partnered with Jisc, the UK's digital body for education and research, to develop the Kortext Open Resources Collection, giving students access to 13,000 free eBooks and academic publications. These publications support a broad range of subjects from arts, business and environment, all the way through to information technology, medicine and English literature.

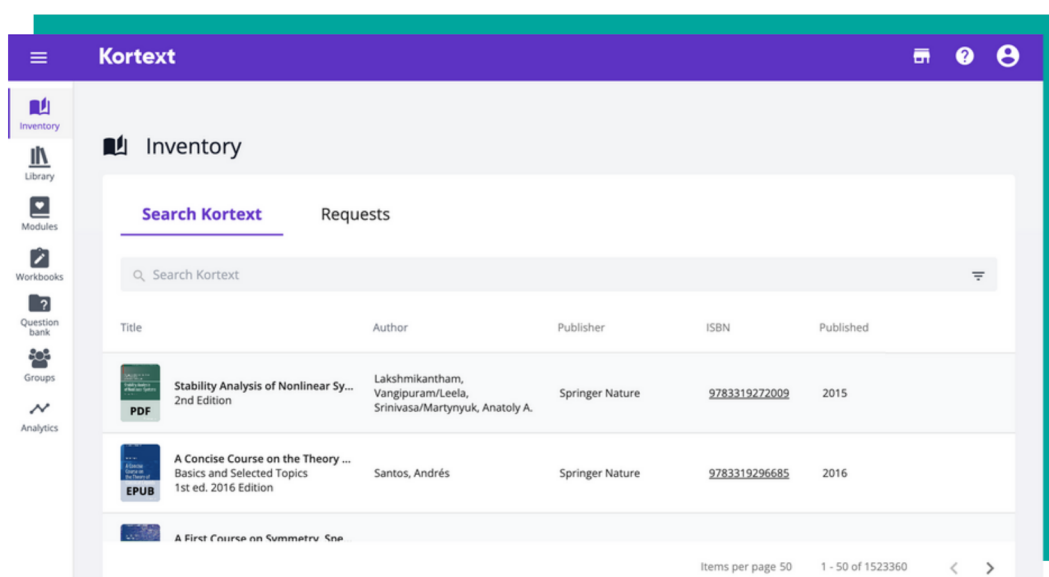
This collection is available to institutions on request.

Inspection copies

Inspection copies are available one year after the book is published. To request an inspection copy, simply sign in to your Kortext account, tap on the Inventory tab that has been circled below, and then select 'Search Kortext' from the drop down menu.

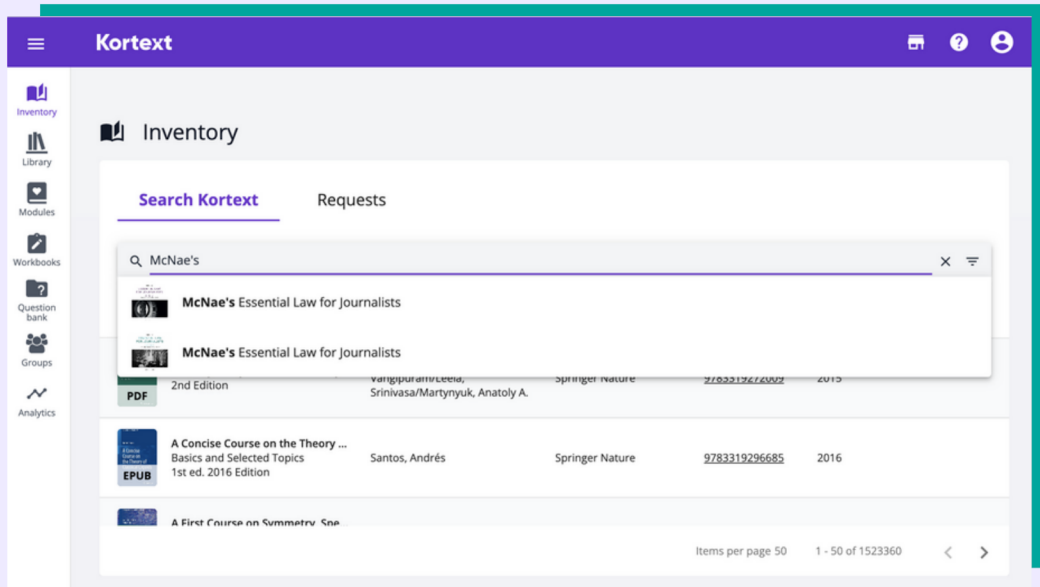


Once you've tapped on 'Search Kortext', you'll be taken to the inventory, which will allow you to search the entire Kortext Inventory.

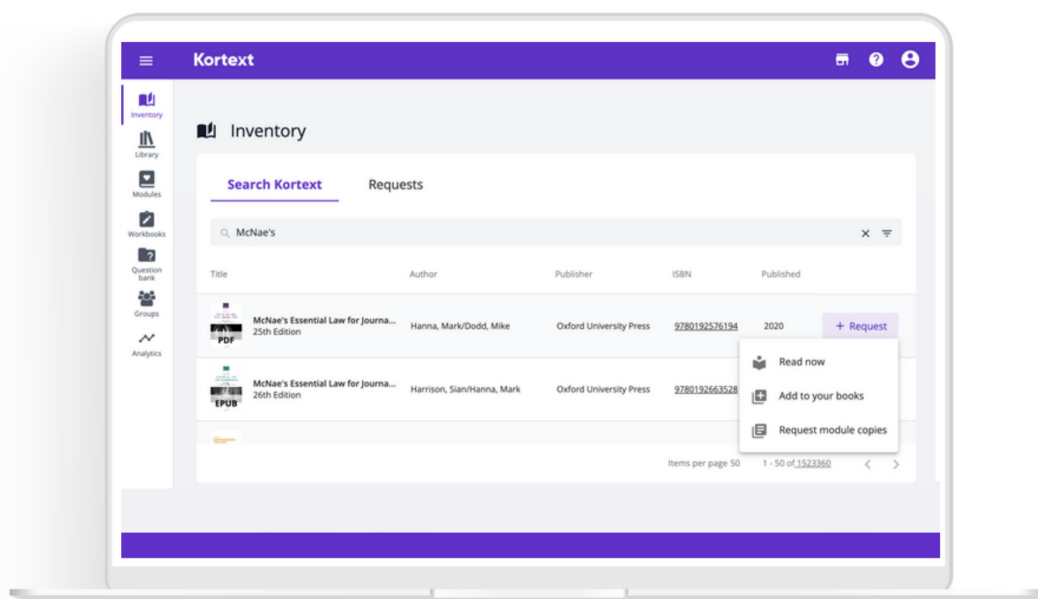


Academic's guide

Simply enter a book title, author, or ISBN into the search bar to begin your search.

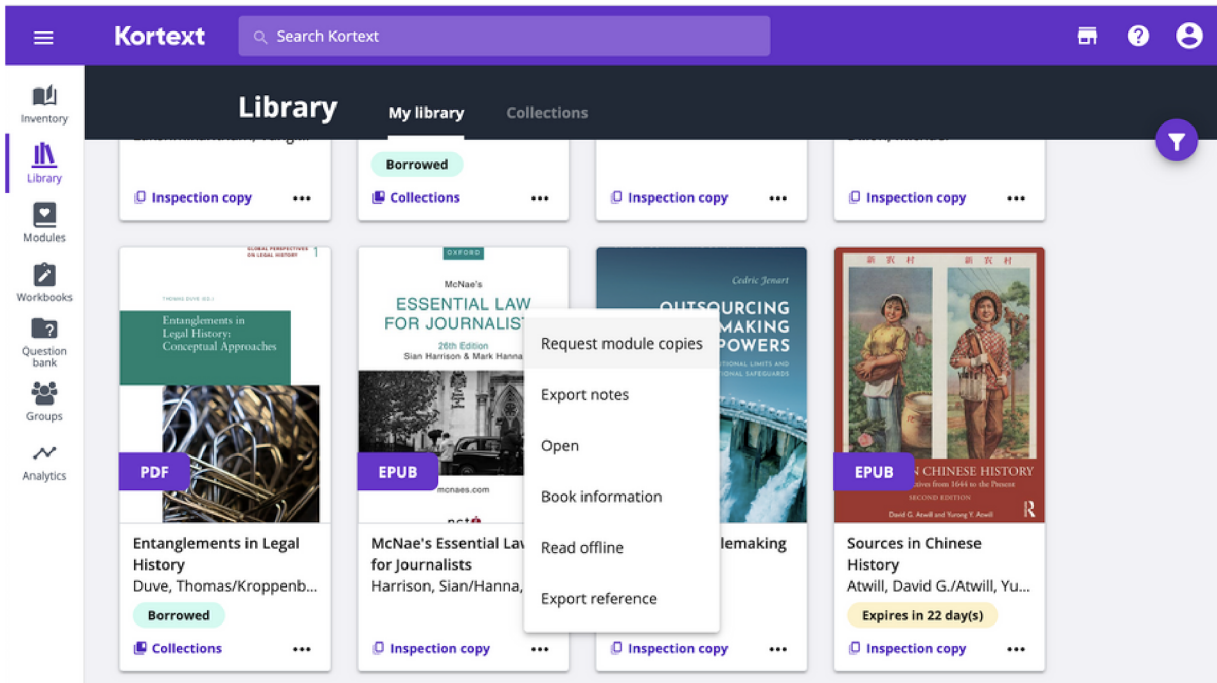


By tapping on the book title you're interested in, you'll be able to see the information about the book selected. If the book meets your needs, tap on '+ Request' to be presented with several options. Selecting 'Add' to your books will add the inspection copy to your bookshelf.

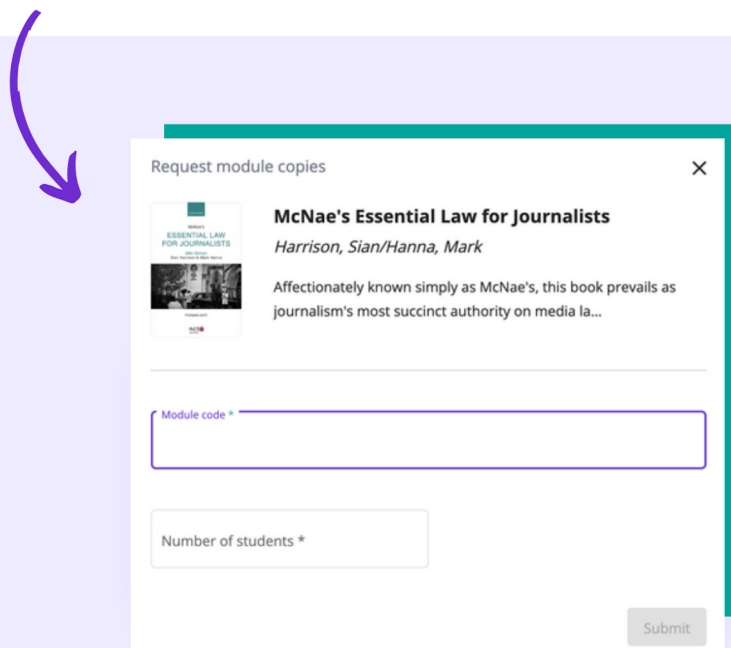


Academic's guide

If you would like to utilise this book for your modules, tap on the three dots below the book cover on your bookshelf and select 'Request module copies'.



Once selected, a pop-up will appear to allow you to enter the module code and the number of students that the text will be provisioned to. After adding the information, hit 'Submit', which will then submit the request to the librarians at your institution to fulfil.



Studying has never been easier with instant access to our vast array of interactive study tools to enhance the learning experience. Students can make notes, search texts, have content read aloud, collaborate with peers and more.

Contract Law

Situations of paying less are as discussed in the previous section, regarding attempting to discharge the original contract by paying a lesser amount. Such an agreement would be seen as a variation or alteration of the original contract, and as such would require some further consideration in the form again of 'something extra'. This is what was missing in the *D&C Builders* case, and any situation which showed the 'something extra' would most likely be one that fell under the rule in *Pinnel's Case*. There would need to be 'a hawk, a horse or a robe', as discussed in that case.

Each agreement requires good consideration from *both* parties (see [Figure 3.5](#)).

Party A ↔ Agreement: original contract ↔ Party B

Party A ↔ Agreement: to vary original contract ↔ Party B

Figure 3.5 Consideration in variation of contract

Page 67 (103 of 514) Location 110 - 111 / 441

Contract Law

of agreement is not individually between the debtor and the creditors, but one between the creditors that they each will accept a certain percentage of their debt from the debtor. Often the agreement is seen in terms of the consideration from the debtor being the agreement to pay, whilst the consideration from the creditors would be to agree not to file in bankruptcy for the full amounts they are entitled to. There was an attempt to extend this in the case of *Collier v P & M J Wright (Holdings) Ltd*. However this attempt to divide up an existing debt that was jointly owed was unsuccessful.

Collier v P & M J Wright (Holdings) Ltd [2007] EWCA Civ 1329

In this case, there were three debtors who were jointly liable for a debt to Wright Holdings. Collier was one of the debtors and secured an agreement to discharge their liability in exchange for payment of one-third of the debt. Normally all parties would be considered to be jointly liable for the whole debt. Collier paid one-third of the debt, claiming that this was his share of the obligation, despite the fact that the debt was jointly owed and not subdivided. The other two debtors went bankrupt and Wright pursued all three debtors for the remaining debt. There was an attempt by Collier to argue that the agreement to discharge him from his obligations after paying the one-third share was binding.

Held: the court however did not further extend the rule in *Pinnel's Case*.

3) promissory estoppel. Below. Promissory estoppel is an exception to the rule that promissory estoppel is enforceable.

3.7.2 Consideration and alteration

Consideration is not only a necessity when it comes to the formation of a contract. The usual rule is that consideration, in fact, this is in itself in this regard. The rule is that consideration is a necessary element of a contract.

3.7.2.1 Paying more

Where a party attempts to discharge a contract, this has consideration in order to be legally binding. In *Stilk v Myrick*, an extra payment to be legally binding where that party has gone beyond what was provided 'something extra'. It was missing in the *Stilk* case, but was present in *Marsden v*

Display options

Open Dyslexic

Small mode

Pages

Page width

Text size

Layout

Theme

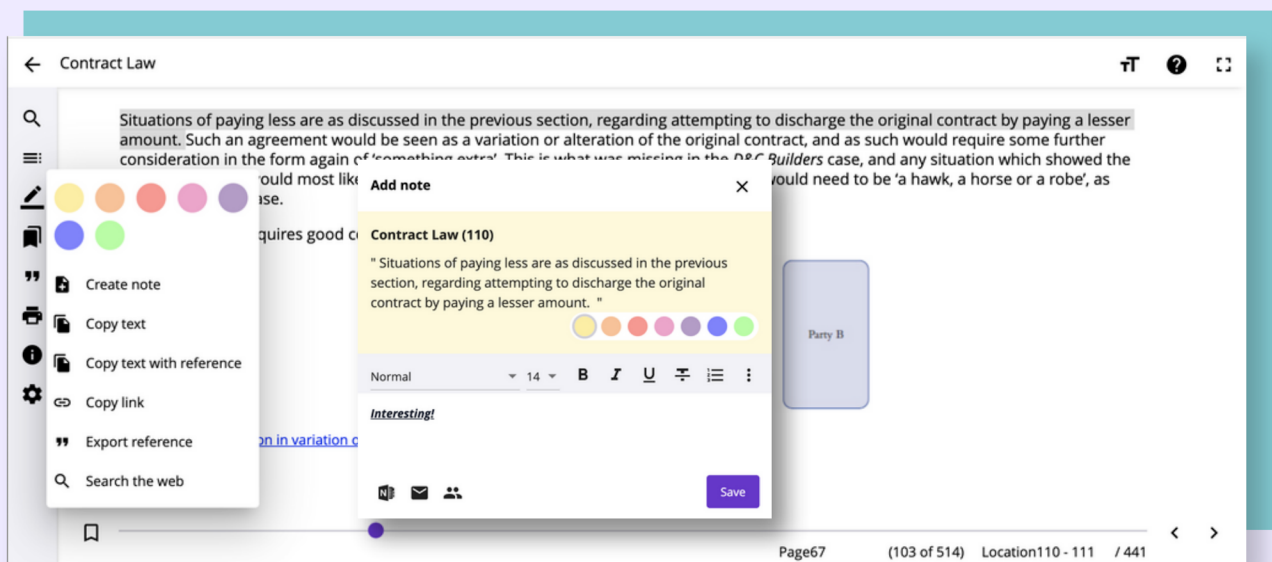
Reset to default

Our eReader also includes gold-standard accessibility features, with options to alter font type and size, page colour and more, all within our interactive eTextbooks, enabling all users to personalise their learning experience.

Smart study tools

Within the eReader, users will have access to Kortext's range of smart study tools, including: highlighting, rich text annotations, reference exports and more.

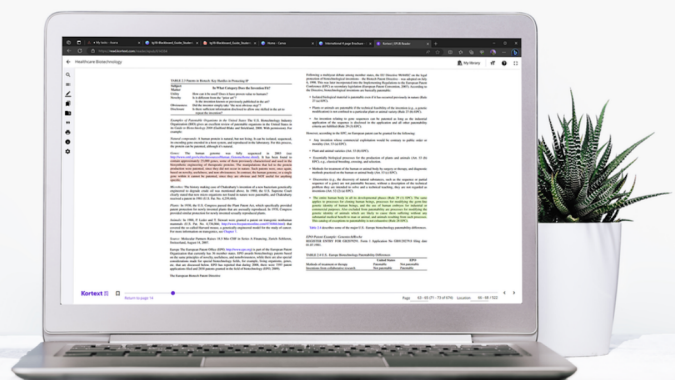
Students using our notes feature will also benefit from our rich text editor, enabling them to bold, underline and italicise their notes and enhance them with links to web pages, images and videos. Students can also share notes with classmates via email and Microsoft Teams.



Student friendly study tip – colour coding notes!

When introducing the platform to your students, encourage them to colour code their study notes.

For example, when making notes on key points, suggest that they highlight in one colour. As their knowledge of the topic progresses, they can change it another colour that suits them.

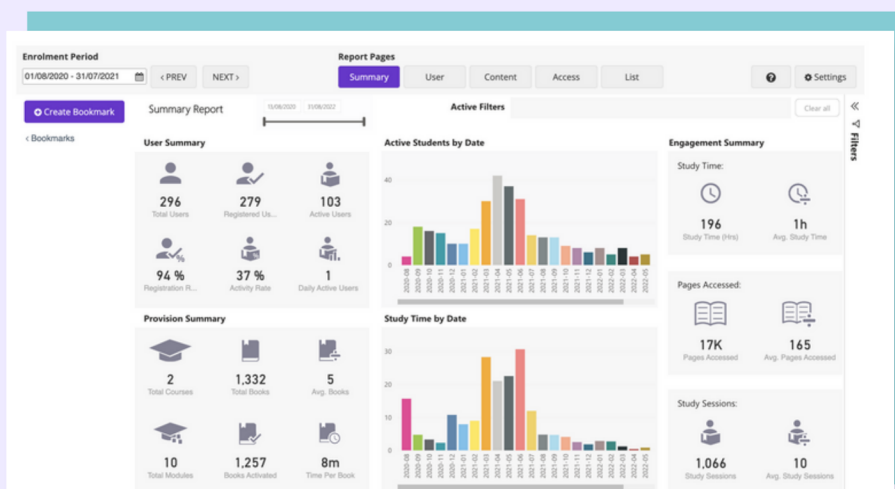


Analytics

With our analytics dashboard, you can see study patterns, student behaviours and content usage. The data allows you as an academic or course leader to better understand how your students learn and what you can do to keep them engaged.

Dashboard elements

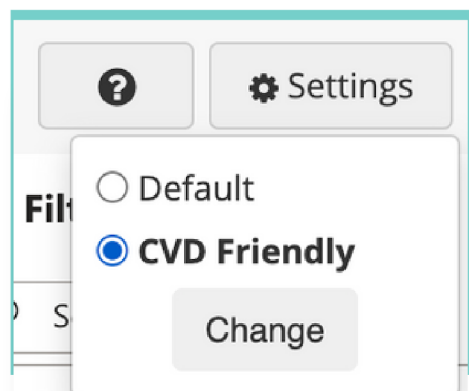
There are four main elements to the analytics dashboard. The first element is the top ribbon that contains the Enrolment Period, Report Pages and Settings. The second and third elements are the Bookmarks and Filters panels which can be expanded and collapsed. The fourth element is the analytics dashboard which houses the data - depending on which report page you've selected.



Custom view settings

Before diving deeper into the analytics dashboard, you should know that via Settings, you can change the colour scheme of the visualisations should you need to.

'Default' is the Kortext standard colour scheme and 'CVD Friendly' will change the default scheme to one that is accessible for users with colour vision deficiency.



Reports

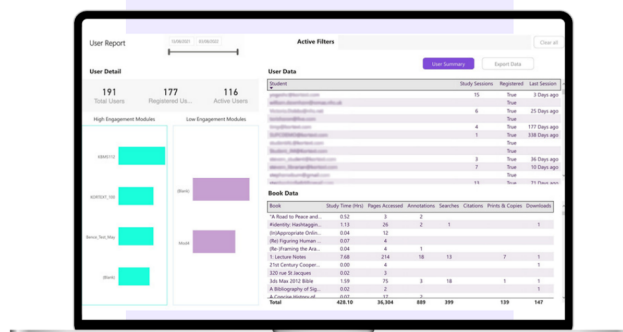
Summary Report

The Summary Report is a high-level overview of student engagement on the Kortext Arcturus platform. The report contains a summary of student enrolment and engagement, which shows how students have engaged with their books via the platform.



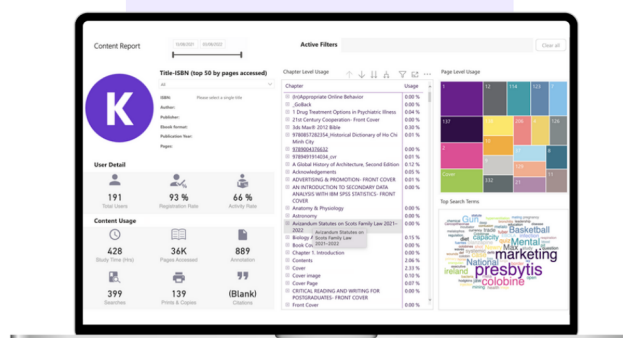
User Report

The User Report has a detailed breakdown of the User Summary. Included in the report are lists that highlight both low and high engagement modules.



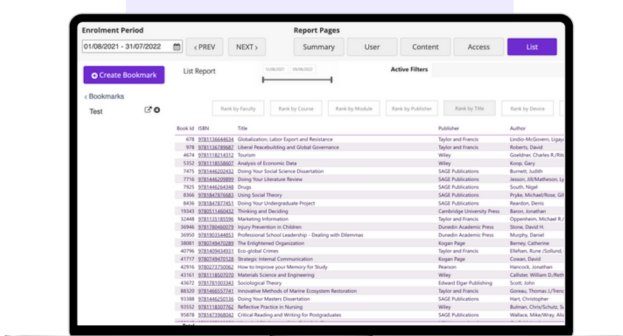
Content Report

The Content Report details every unique item of content provisioned to users through the platform. Usage can be seen down to chapter level. Usage can also be seen by page and with a word cloud of every search term.



List Report

The List Report is an easy way to review data from the dashboards according to the set filters. You can then extract these reports for use in other systems or use them to rank the data.



Data Definitions

The Data Definitions section contains definitions and explanations for each data point and measurement used in the Kortext analytics dashboards. You can find them by clicking on the question mark in the top right ribbon.

The screenshot displays the Kortext analytics dashboard interface. At the top, there is a navigation bar with 'Enrolment Period' (01/08/2021 - 31/07/2022) and 'Report Pages' (Summary, User, Content, Access, List). A 'Help' icon is visible in the top right corner. Below the navigation bar, the 'Data Definitions' section is active, showing a 'Summary Dashboard' with eight data points:

- Total Users**: The total number of users enrolled on the Kortext Platform during the enrollment period.
- Registered Users**: The total number of enrolled users, *Total Users*, that have accepted the terms and conditions of the Kortext Platform.
- Active Users**: The total number of *Registered Users* that have accessed content on the Kortext Platform by either reading a page or downloading content.
- Registration Rate**: The percentage of *Total Users* who have registered on the Kortext Platform, calculated as $\text{Registered Users} / \text{Total Users}$.
- Total Courses**: The total number of courses that users, *Total Users*, are associated with.
- Total Modules**: The total number of modules that users, *Total Users*, are associated with.
- Total Books**: The total number of books that have been allocated to the *Total Users*.
- Books Activated**: The total number of books, *Total Books*, that have been allocated to *Registered Users*.





Kortext 

For help, please visit:

support.kortext.com